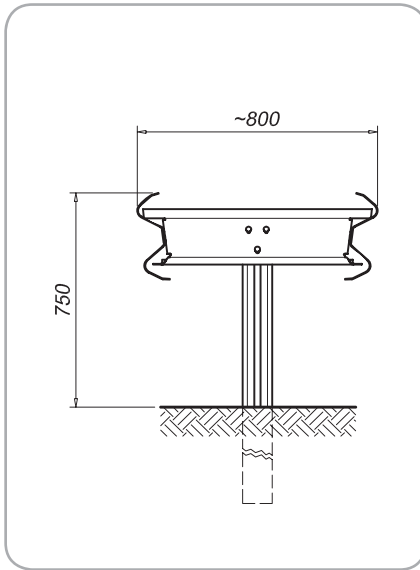


## DOUBLE SIDED SAFETY BARRIER ON GROUND (TRAFFIC DIVIDER) H1-A-W6 (B22478)



### Performance

Containment level	H1
Acceleration Severity Index "ASI"	A
Working width	W6 (1.95m)
Extreme lateral position of the vehicle	-

### Characteristics

Height out of ground	750 mm
Transversal overall dimensions	800 mm
Centre to centre between posts	2000 mm
Tested minimum length	120 m



### Description

Supply and erection of 2-waves safety barrier with 2 beams, thickness 3.0 mm, SIGMA posts 100x55x4.2, h. 1900 mm, driven into the ground every 2000 mm, TL-SP spacers 780x194x3 mm, sleeve 113x68x4 mm, nuts and bolts and reflectors.

S235-275-355JR steel in quality-according EN 10025

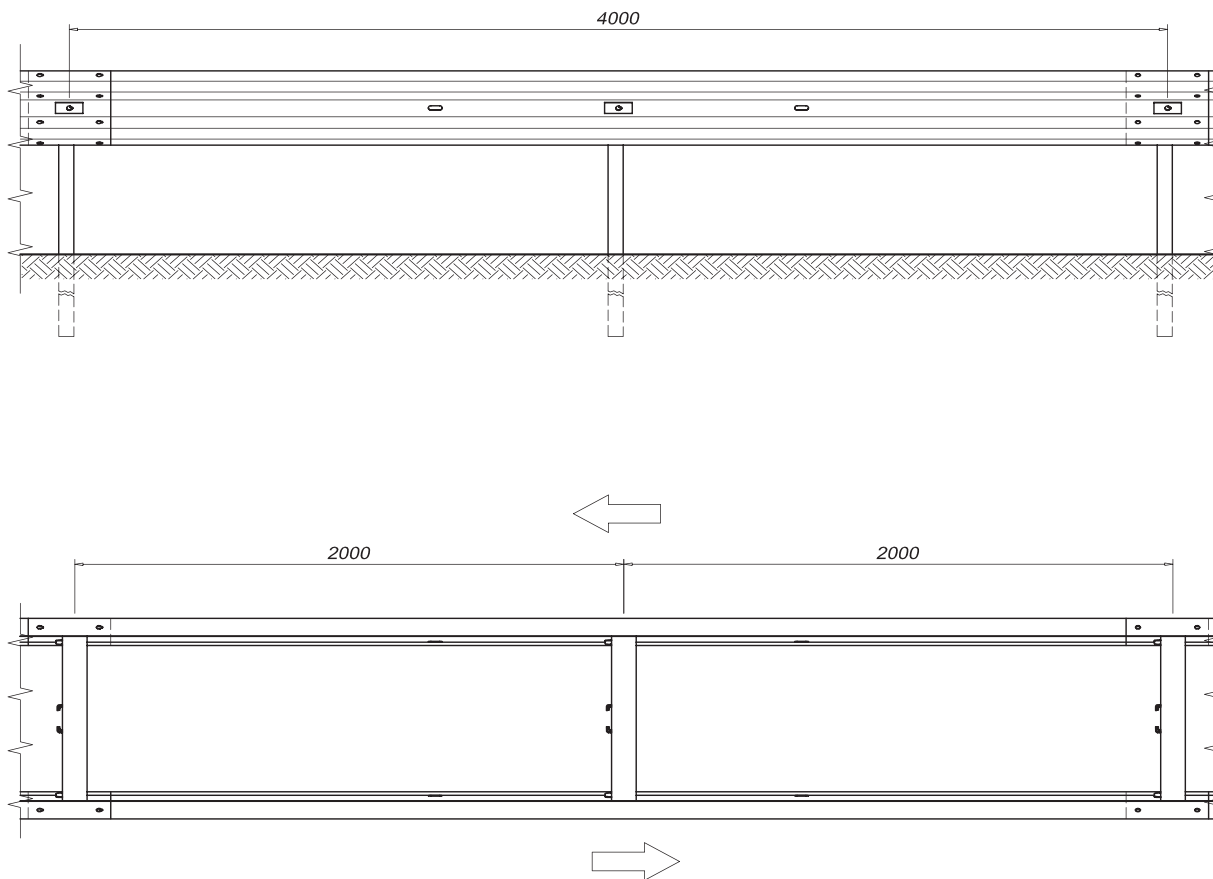
Hot dip galvanization according EN ISO 1461

Nuts and bolts according EN ISO 898 - EN 20898 - UNI 3740/6

All particulars are in accordance with crash tests requirements.

Revision 1 FT of 26/01/2010

## Elevation



## Section

	Description
1	Sigma post 100x55x4,2 mm H=1900 mm
2	A beam c/c. 4000 mm th. 3,0 mm
3	Spacer 780X194 mm th. 3 mm partially mounted with sleeve C114x69x24 L=130 mm th. 4 mm
4	Plate 100x45x5 mm

